



WHAT IS IN THE CONTRACT?

FREE CE COURSE FEATURED IN JULY ARCHITECTURAL RECORD.

What is in the contract? This important document contains the guiding principles in any project, before, during, and after design and construction. When it comes to an automatic parking system (APS), however, there is no widely accepted standard contract to guide a project from inception to completion.

This course provides elements from such a contract. The model contract

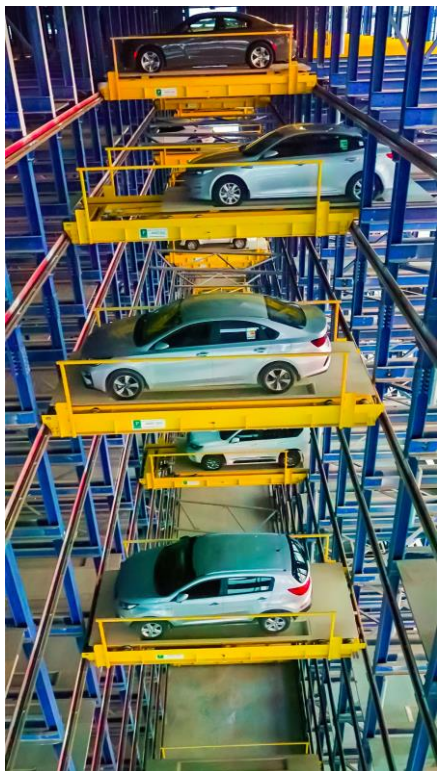
demonstrates the importance of providing neutral, comprehensive, and industry contract specifics and specs that—in the interest of all involved from users, owners, planners, and providers—are vital for the success of automatic parking in general. In addition, the course presents a



“ A successful automatic parking system (APS)—and the document that made it happen. ”

comprehensive case study of the largest APS in the world that was successfully executed—manufactured in the United States, delivered overseas, and installed—using the model contract expanded upon here.

[Learn more about this free AIA CE course.](#)



HANDICAPPED AND DEAF ACCESS



There often are inadequate numbers of available handicapped accessible parking spaces in conventional ramp garages and parking lots. For many veterans and others who are handicapped/disabled, robotic parking garages are the easiest to use. The individual would depart his/her vehicle near the entrance to the automated garage and not have to navigate throughout the garage.

Additionally, robotic parking technology best complies with the concept of the DeafSpace Guidelines that were developed by Gallaudet University in coordination with Dangermond Keane Architecture. Since patrons exit and retrieve their vehicles at the entry/exit terminals, there is no long walk to and from vehicles inside a typical multi-story garage with their many structural, visual, auditory, and lighting shortcomings. *(excerpted from White Paper by Roger Courtney, Esq.)*

[Click here for a free copy of the white paper.](#)



NEW VIDEO

Protecting Precious Valuables

<https://www.youtube.com/watch?v=M02jJg3ubN0>



Protecting precious valuables. Our automated parking system protects your vehicle in the most secure way possible. Our pallets safeguard your valuable vehicle without a touch. No machinery drives under your car or grabs it by the tires. So, there's no risk of damage to low lying elements. And, our solid one-piece pallets ensure that leaking fluids never fall through onto other vehicles or machinery. Safe. Secure. Protected. Robotic Parking Systems. Always Ahead.



ON THE WEB

PARK IT HERE BLOG

The Park It Here blog explores ways that Robotic Parking Systems technology might assist city planners, architects, civic groups, developers, environmentalists and other innovative thinkers seeking to enrich our cities. [Learn more.](#)

FACEBOOK

[Find us on Facebook.](#) You'll have access to photos, videos and up-to-date news on Robotic Parking Systems.



YOUTUBE

Our [YouTube channel](#) contains numerous videos of the Robotic Parking System.

TWITTER

Robotic Parking Systems create more space for design and development. [Follow us on Twitter.](#)

ROBOTICPARKING.COM

Our web site, roboticparking.com, contains product and technical information, tools, photos, videos, brochures and more.

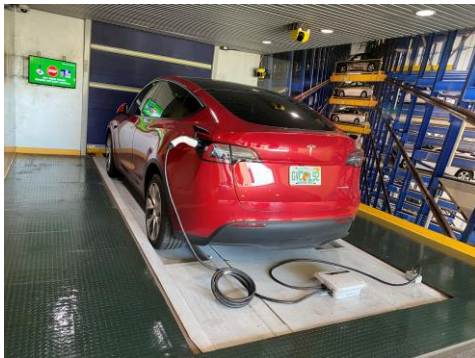
LINKEDIN

Connect with us on [LinkedIn.](#)

FREQUENTLY ASKED QUESTIONS:

What level of EV charging is provided?

The EV charging station provides Level 2 charging. For more detailed information, [click here](#) for our technical specifications sheet. For more EV charging FAQs, [click here](#).



What make and model cars can be charged in the garage?

We cover all makes and models with J1772 charging plug and all Tesla models. For more EV charging FAQs, [click here](#).

J1772



Tesla



PARKING FACTS:

First UK Multi-Story Car Park

The City & Suburban Electric Carriage Company at 6 Denman Street, central London, opened the first multi-story car park in the UK (and probably the world) in May 1901. The garage had seven floors, space for 100 vehicles and an electric elevator to move the vehicles between floors.

The 1901 motor carriage of Queen Alexandra of England was supplied by this company.



Robotic Parking Systems, Inc.

Always Ahead

12812 60th Street North, Clearwater, FL 33760

P: 727-539-7275 / F: 727-216-8947

www.roboticparking.com / info@roboticparking.com

