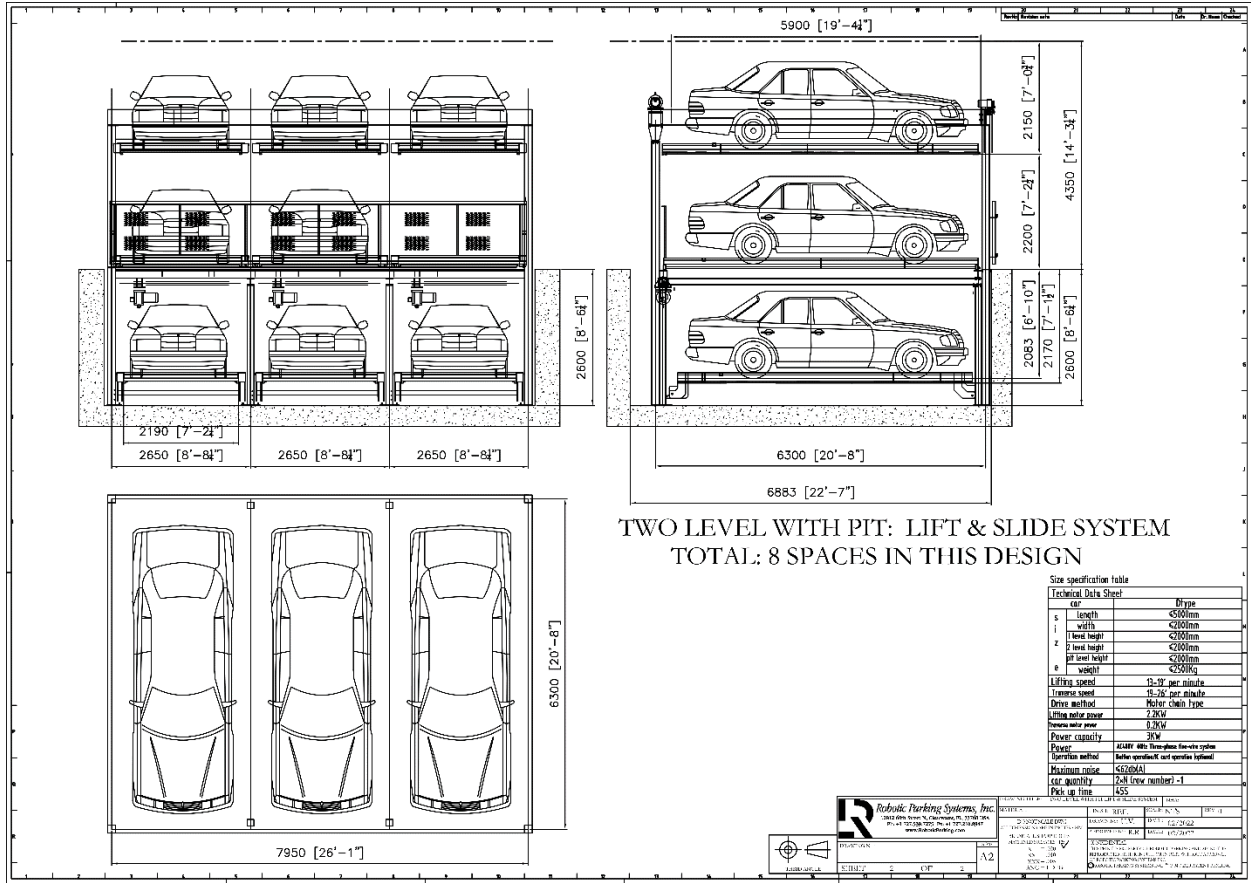


LIFT AND SLIDE SEMI-AUTOMATED SYSTEM TECHNICAL SPECIFICATIONS



- The Lift and Slide system is semi-automated.
- Accommodates less than 200 cars.
- Can be built with 2 levels below entry level and up to 6 levels above grade. Tandem configurations can also be implemented.
- Cars are lifted up by chains and moved laterally by a superior motor driven system.
- Can be built indoors or outdoors as per the site requirements.
- The system is a free-standing steel structure design; is connected to the foundation with anchor bolts and has no connection to the building columns.
- Useful in developments where minimal height is available in the entry level.
- Works with retrofits and requires minimal modifications.
- Can be equipped with electric vehicle charging stations.
- Built-in safety systems in the lift and access areas.
- Average retrieval times range from 30-50 seconds.
- Car sizes vary from 5.0 meters (16.4 feet) to a maximum of 5.8 meters (19 feet).
- Car weights may vary up to a maximum of 2500 kg (5500 lbs.)
- Car widths may vary from 1.8 meters (5.9 feet) to a maximum of 2.0 meters (6.56 feet).



TWO LEVEL WITH PIT: LIFT & SLIDE SYSTEM
TOTAL: 8 SPACES IN THIS DESIGN

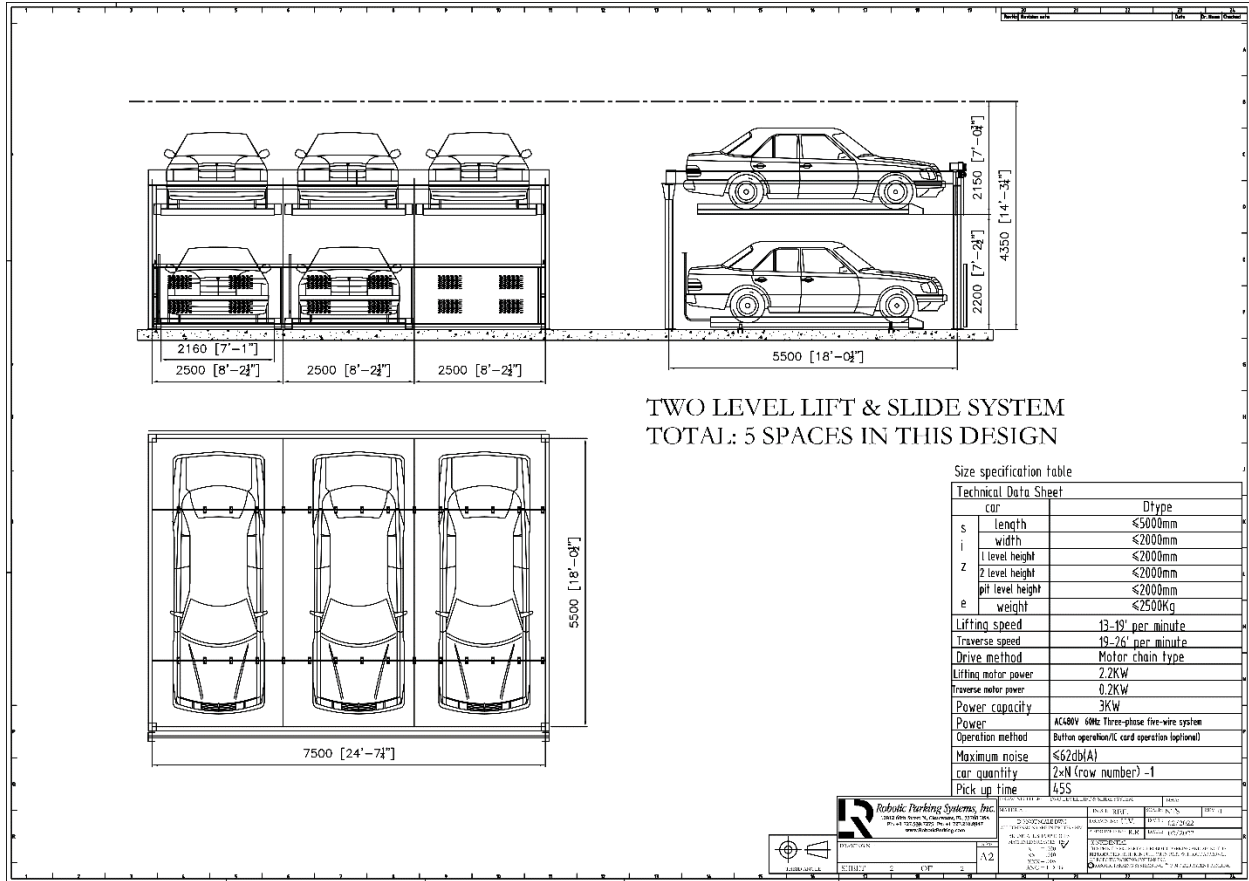
Size specification table

Technical Data Sheet	
car	Dtype
1 length	4500mm
1 width	1800mm
2 level height	4200mm
2 level height	4200mm
pit level height	1000mm
weight	2500kg
Lifting speed	0-30 per minute
Transfer speed	0-30 per minute
Dense method	Roller chain type
Lifting motor power	2.2KW
Transfer motor power	0.75KW
Power capacity	30W
Power	AC400V 50Hz Three-phase five-wire system
Operation method	Roller operation and operation optional
Maximum speed	4500mm
car quantity	2-8 (lower number) -1
Pick up time	45s

Robotic Parking Systems, Inc.
 20000 10th Ave. S. #1000, Tukwila, WA 98164
 Tel: 206-835-1100 Fax: 206-835-1101
 www.robtop.com



PROJECT NO.	DATE	SCALE	REV.
2020020001	12/20/11	1:1	1
PROJECT NAME	PROJECT NO.	DATE	SCALE
2020020001	2020020001	12/20/11	1:1
PROJECT LOCATION	PROJECT NO.	DATE	SCALE
2020020001	2020020001	12/20/11	1:1
PROJECT OWNER	PROJECT NO.	DATE	SCALE
2020020001	2020020001	12/20/11	1:1



Robotic Parking Systems, Inc.
 12812 60th Street North, Clearwater, FL 33755
 727.539.7275 / info@roboticparking.com

